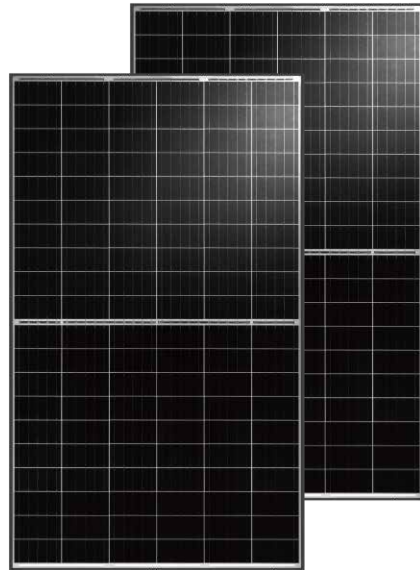


# BISTAR

TP6H60M  
TP6H60M(H) **120 half-cell**

**320 - 340W**

half-cut mono perc



## KEY FEATURES



### Half-cut cell technology

New circuit design, lower internal current, lower Rs loss



### Significantly lower the risk of hot spot

Special circuit design with much lower hot spot temperature



### Lower LCOE

2% more power generation, lower LCOE



### Excellent Anti-PID performance

2 times of industry standard Anti-PID test by TUV SUD



### IP68 junction box

High waterproof level

## SYSTEM & PRODUCT CERTIFICATES

- IEC 61215 / IEC 61730 / UL 1703
- ISO 9001: 2015 Quality Management System
- ISO 14001: 2015 Environment Management System
- ISO 45001: 2018 Occupational Health and Safety Management Systems



## PERFORMANCE WARRANTY



Linear Performance Warranty

Standard Performance Warranty

